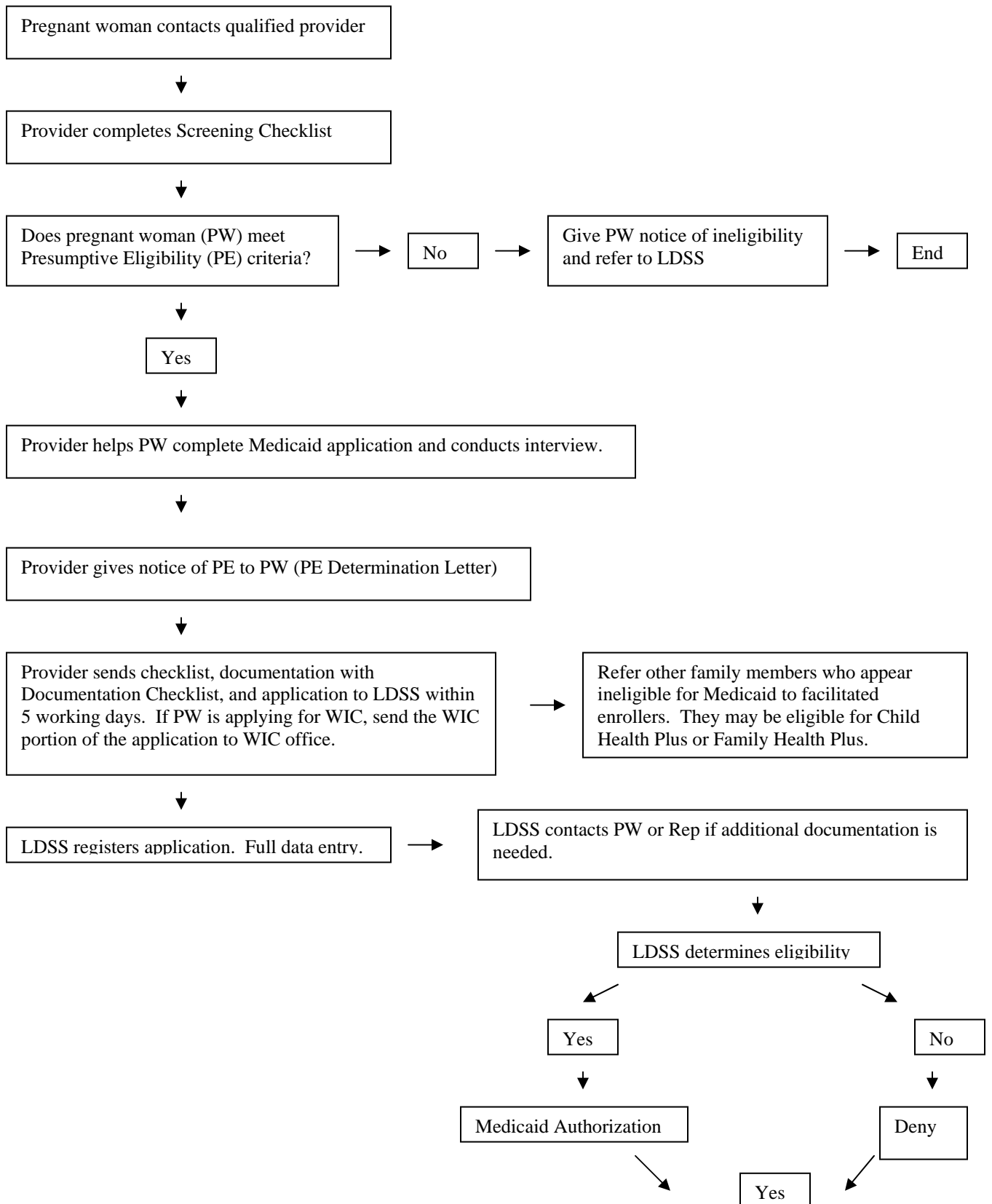


Module 5  
Training Materials

## Overview of Process



## Service Packages for On-Going Medicaid for Pregnant Women

After the presumptive period, if a woman continues to be eligible for Medicaid, she will receive one of the following service packages.

Description	≤ 100% Fully Eligible	≤ 200% Perinatal Family
<b>EMEVS Message</b>	<b>Eligible All</b>	<b>Perinatal Family</b>
Included Services	Physician Care Midwife Care Outpatient Clinic Pharmacy Dental Laboratory Eye Care Transportation Home Health Care Personal Care Nursing Services Podiatry Physical Therapy Occupational Therapy Speech Pathology Durable Med. Equip. Abortion Clinical Psychology Outpatient/Mental Health Outpatient/Alcoholism Health Education Nutritional Counseling Family Planning Hospice Inpatient Care Alternate Level Care Institutional LTC	Physician Care Midwife Care Outpatient Clinic Pharmacy Dental Laboratory Transportation Home Health Care Personal Care Nursing Services Clinical Psychology Outpatient/Mental Health Outpatient/Alcoholism Health Education Nutritional Counseling Family Planning Inpatient Care
Excluded Services	None	Alternate Level Care Institutional LTC Podiatry Eye Care Durable Med. Equip. Abortion Physical Therapy Occupational Therapy Speech Pathology Hospice Long Term Home Health Care

These services are guaranteed until 60 day postpartum.

## Documentation Chart for Expanded Eligibility

For pregnant woman and family applying - husband and/or children age 19-20 use ACCESS NY application (DOH 4220)

Items **1-6** on the previous page **plus** the following:

<b>What needs to be documented</b>	<b>Appropriate documentation</b>
1. Resources (needed for spouse, non-pregnant children aged 19 or 20) <ul style="list-style-type: none"> <li>a. Bank accounts</li> <li>b. Insurance policies</li> <li>c. Burial funds</li> <li>d. Real property other than a homestead</li> <li>e. Motor vehicles</li> </ul>	Bank statements Copy of policy Burial fund agreement Deed or mortgage  Car registration
2. Age of spouse and/or children	Birth certificate, hospital records, driver's license, adoption records
3. Citizenship/alien status	Birth certificate, INS documentation
4. Categorical factors <ul style="list-style-type: none"> <li>a. Death</li> <li>b. Absence of parent</li> </ul>	Death certificate  Divorce/separation papers, statement from woman*

\*optional when woman is pregnant

